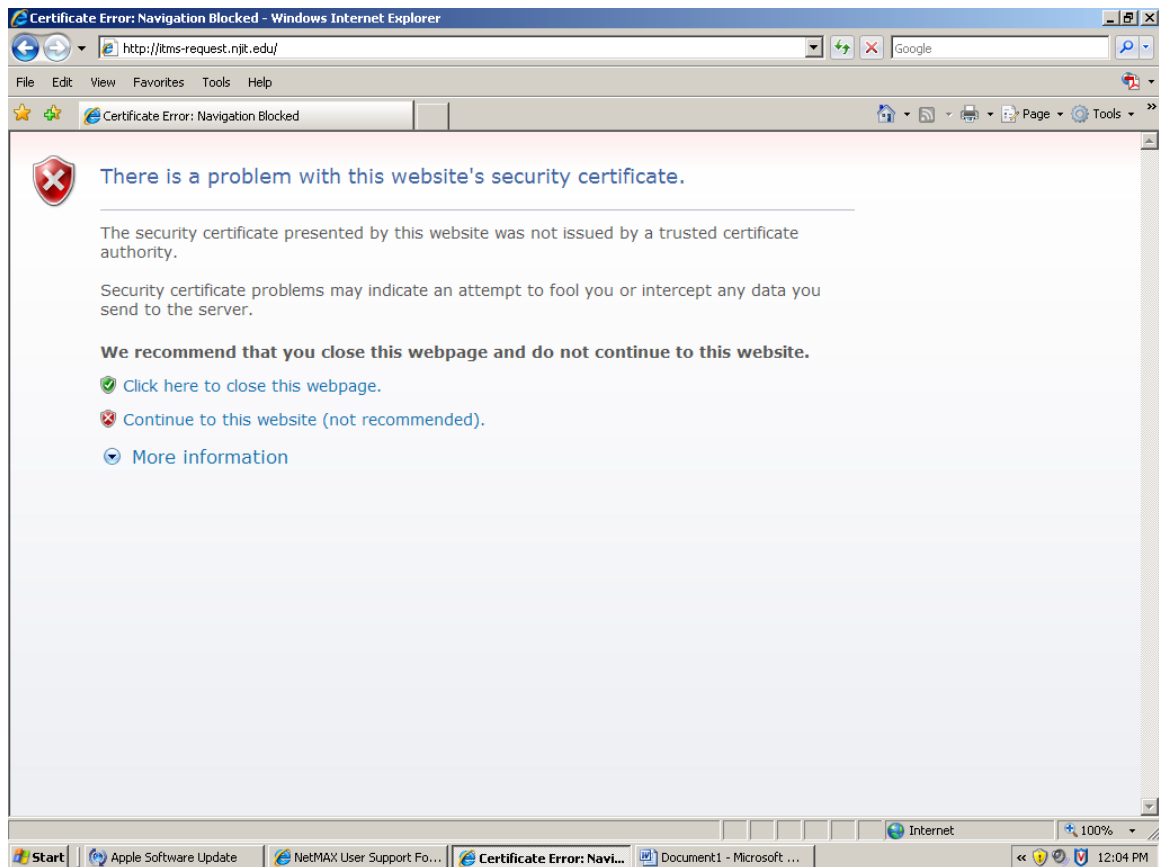


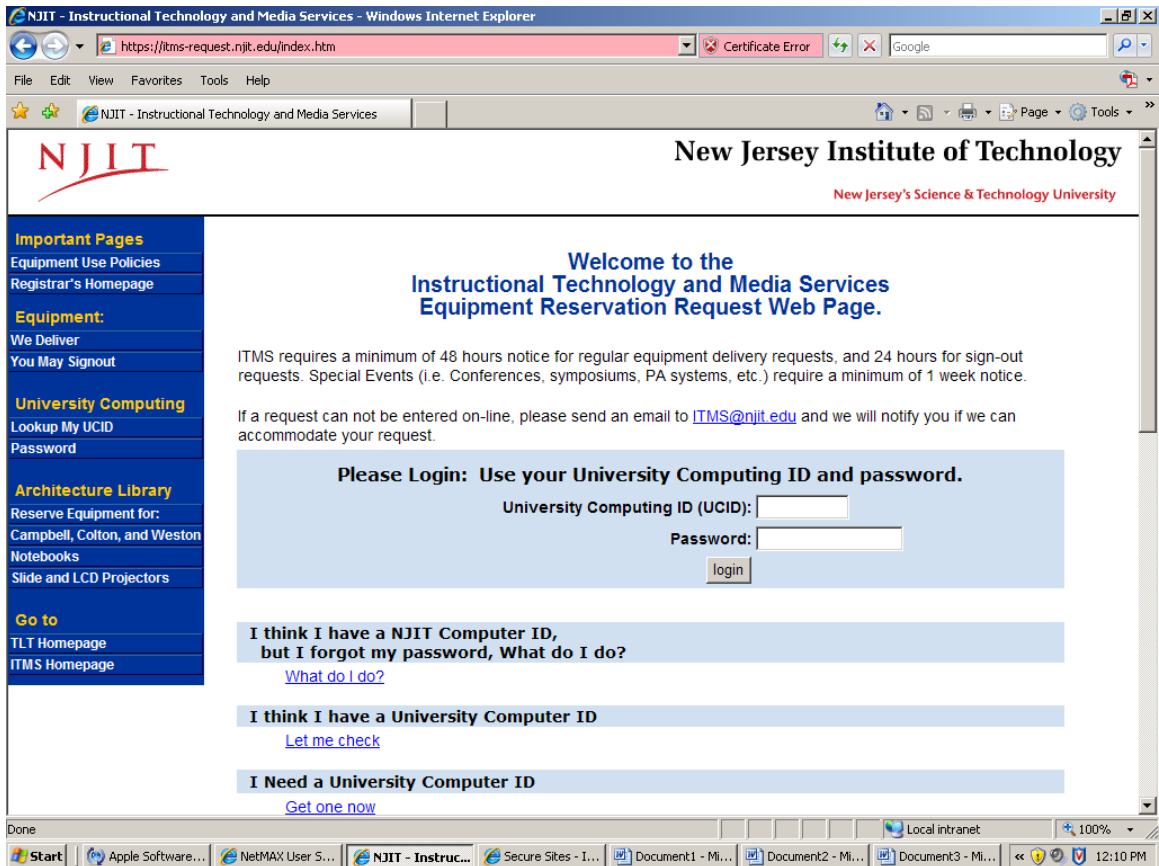
## How to address Certificates being blocked in Internet Explorer 7

Some websites (including several within NJIT) use self-signed certificates by default. Self-signed certificates are not recognized by Microsoft as safe. This may cause an issue for you if you have upgraded to Internet Explorer 7. As you can see from the screenshot, direct navigation to the ITMS request URL( <https://itms-request.njit.edu> ) is blocked by Internet Explorer 7 since a self signed certificates was used.

If you link to the website for the first time, you will see the follow page displayed.



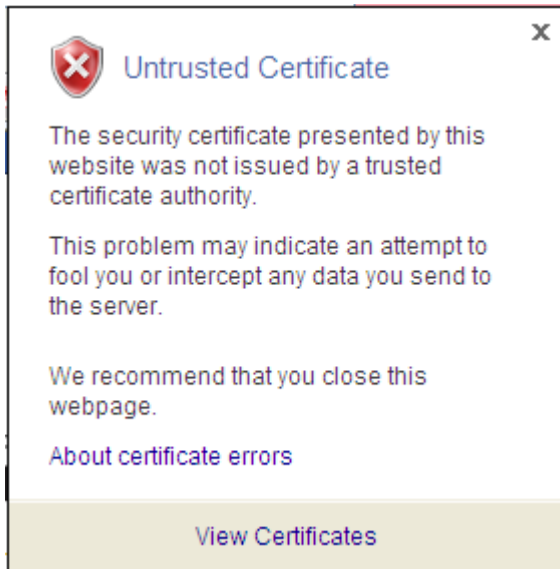
To proceed, please click on **Continue to this website (not recommended)**, and the following page will appear:



Note the red Address Bar and certificate warning:

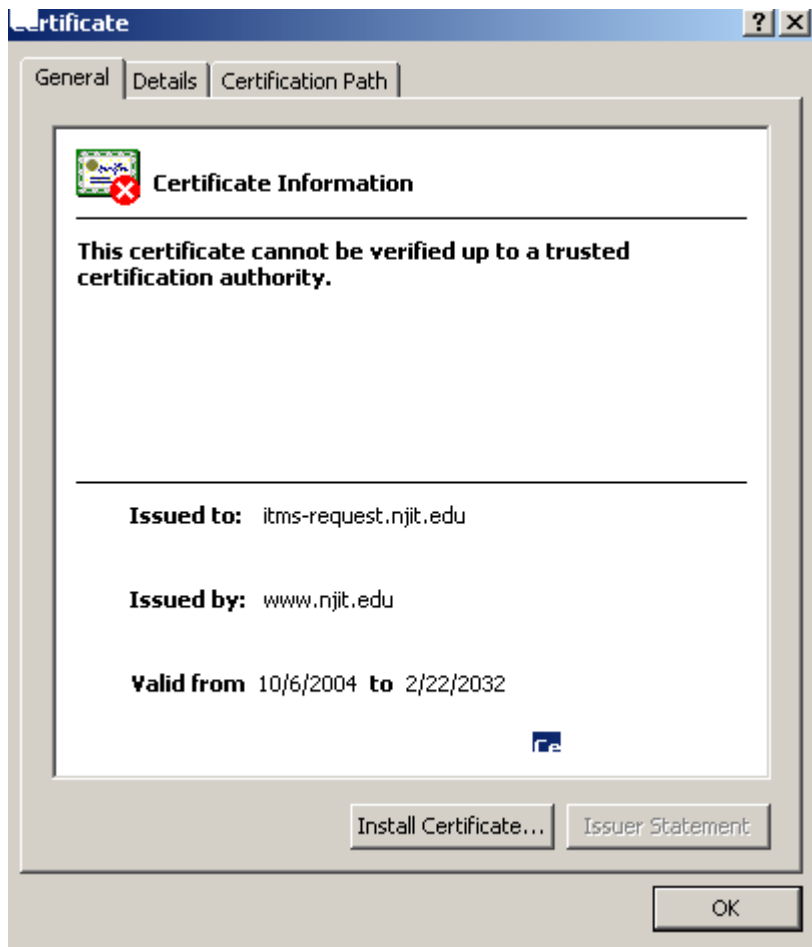


Click on the **Certificate Error** button to open the information window.



Click on **View Certificates**.

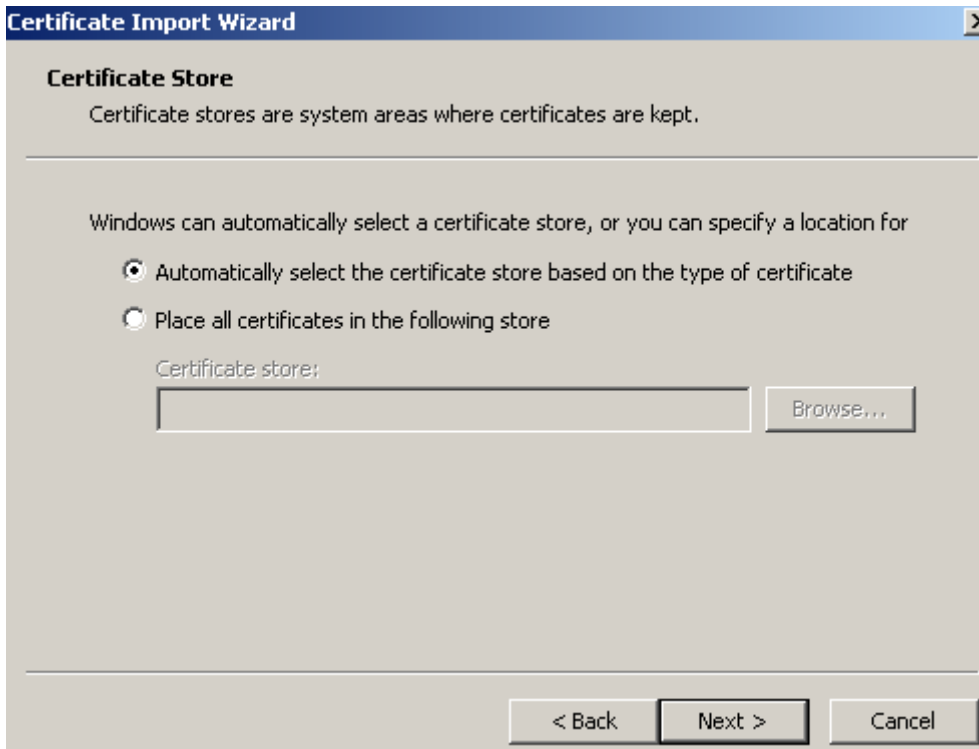
This screen will appear:



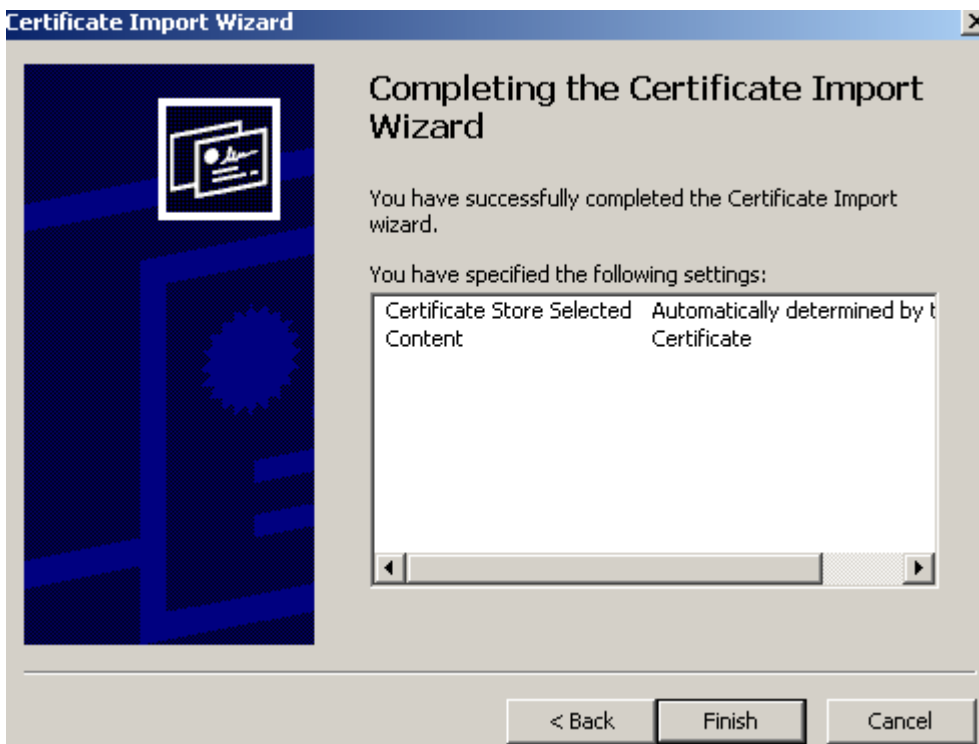
Then click on **Install Certificate**. The following screen will appear:



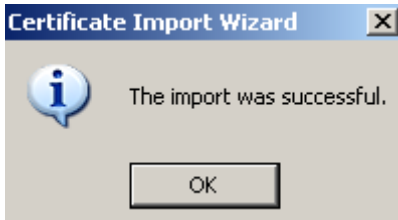
Click **Next**, and leave the default selection:



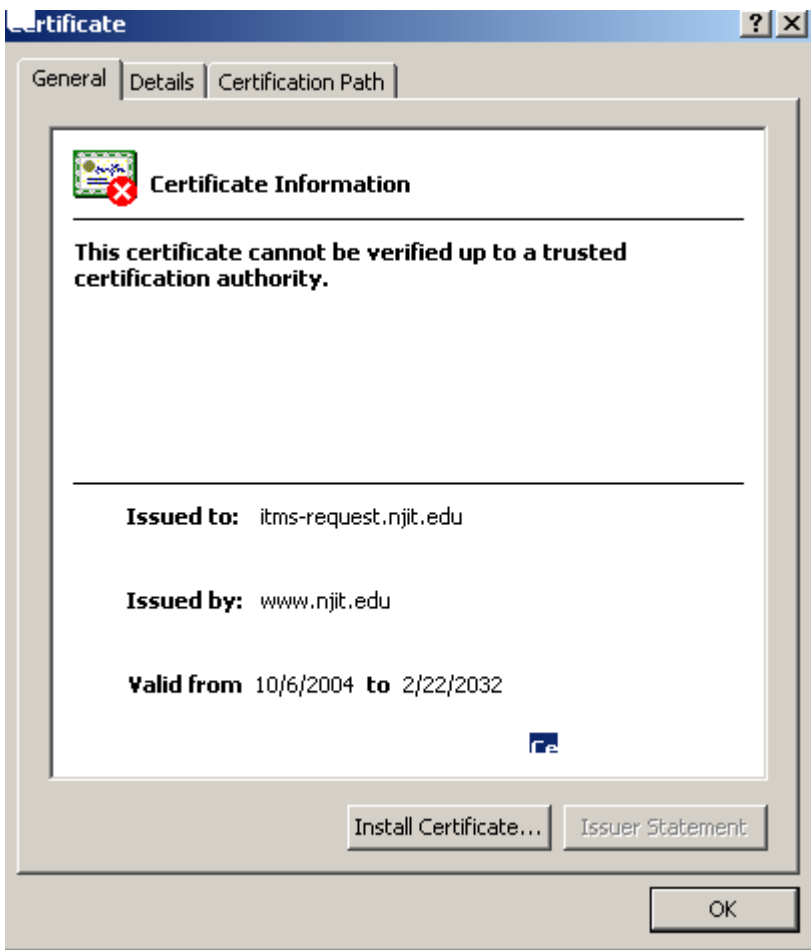
Click **Next** again



And then click **Finish**, and you should get the following confirmation screen:

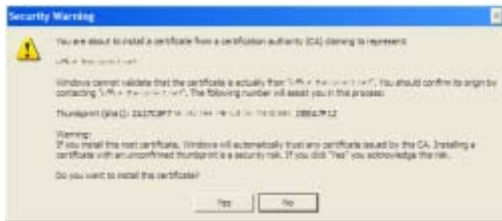


Click **OK**, and you will return to this screen:



Click **OK**.

Depending on your version of IE 7, you may yet another warning.



Click on yes, then you're done.

This procedure will work on any non-trusted certificate. However, you should always confirm that the web site you are accessing is one that you trust before accepting ANY certificate.